

Diploma in Photography

Capture Pictures Perfectly

Lesson 3

Motion and Depth



William Eames

M.F.A (Hons.) Photography

B.A. (Hons.) Photography

15+ Years Experience



About Us



The Team

Lesson 4

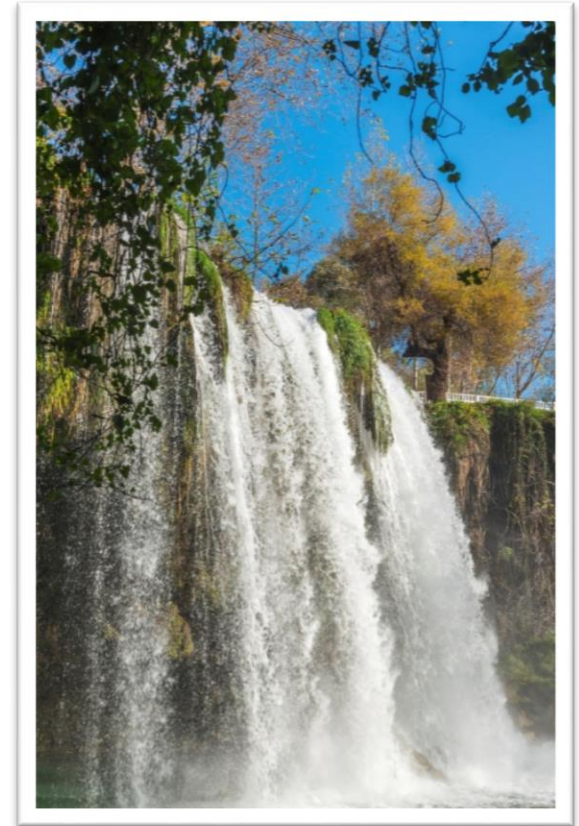
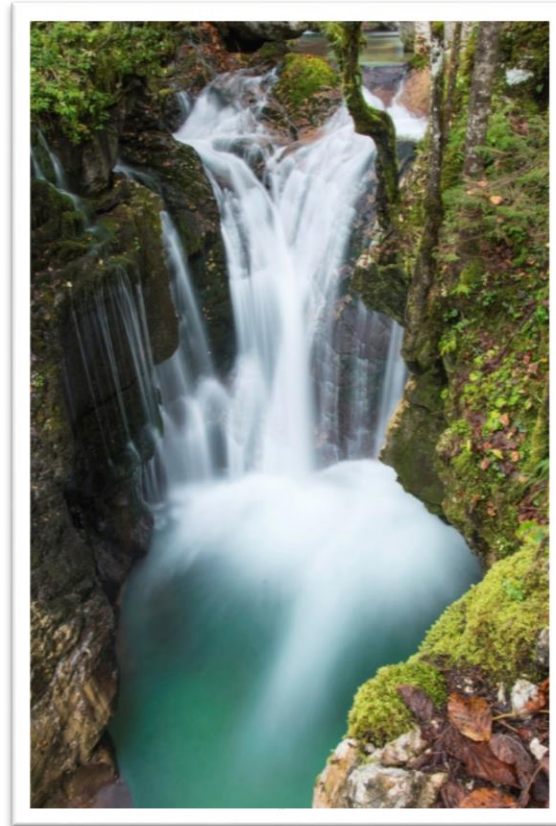
AGENDA



- Course Agenda
- Controlling Motion – Shutter Speeds
- Controlling Depth of Field - Apertures
- Summary
- Course Interaction
- Q & A

Why learn about controlling motion?

- Gain Creative Control
- Expand Creative Potential
- Develop Confidence in Skills
- Consistent Results



Why learn about controlling depth of field?

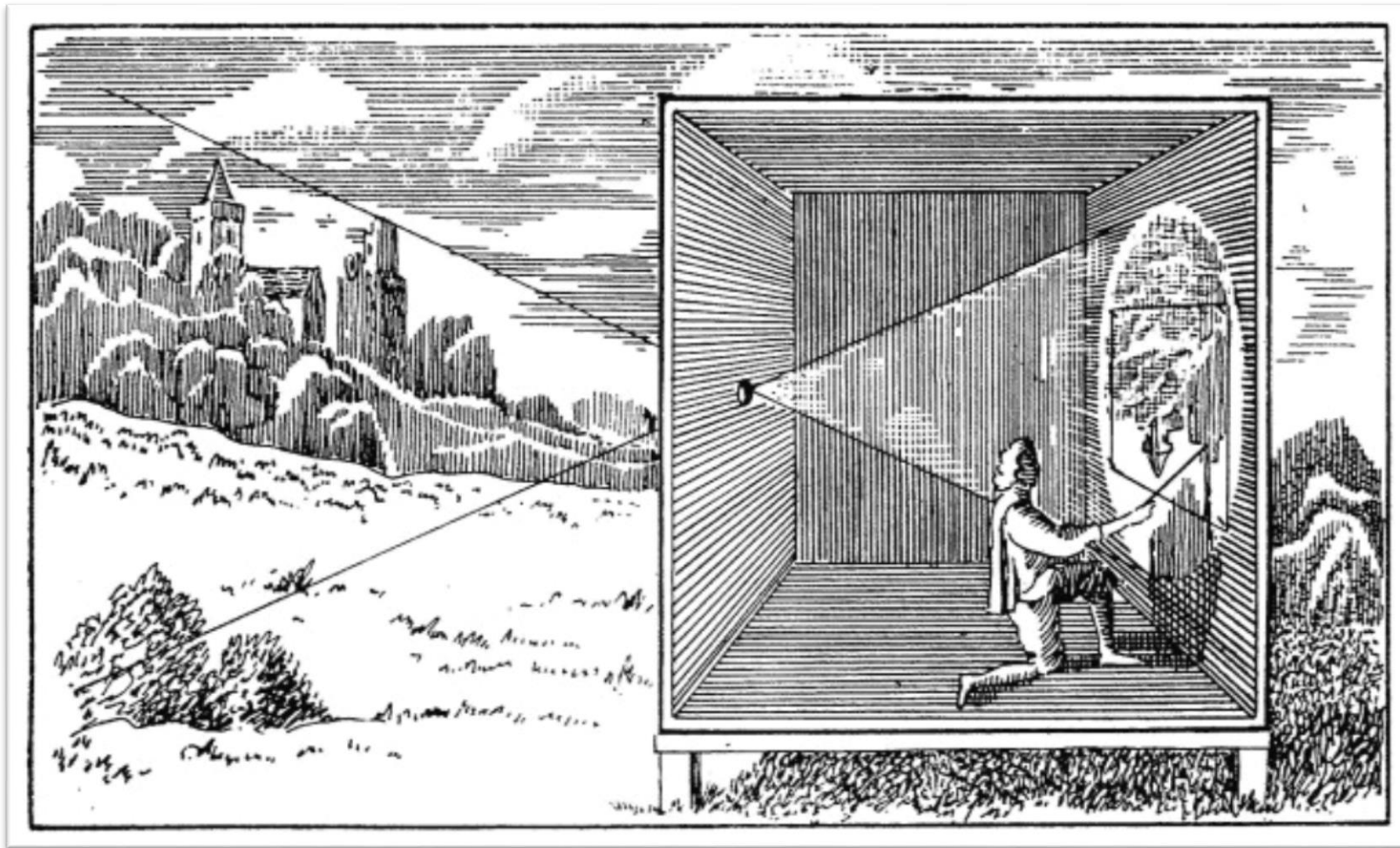
- Fulfil your creative vision
- Ability to control exposure
- Develop photographic vocabulary







Shutter Speeds

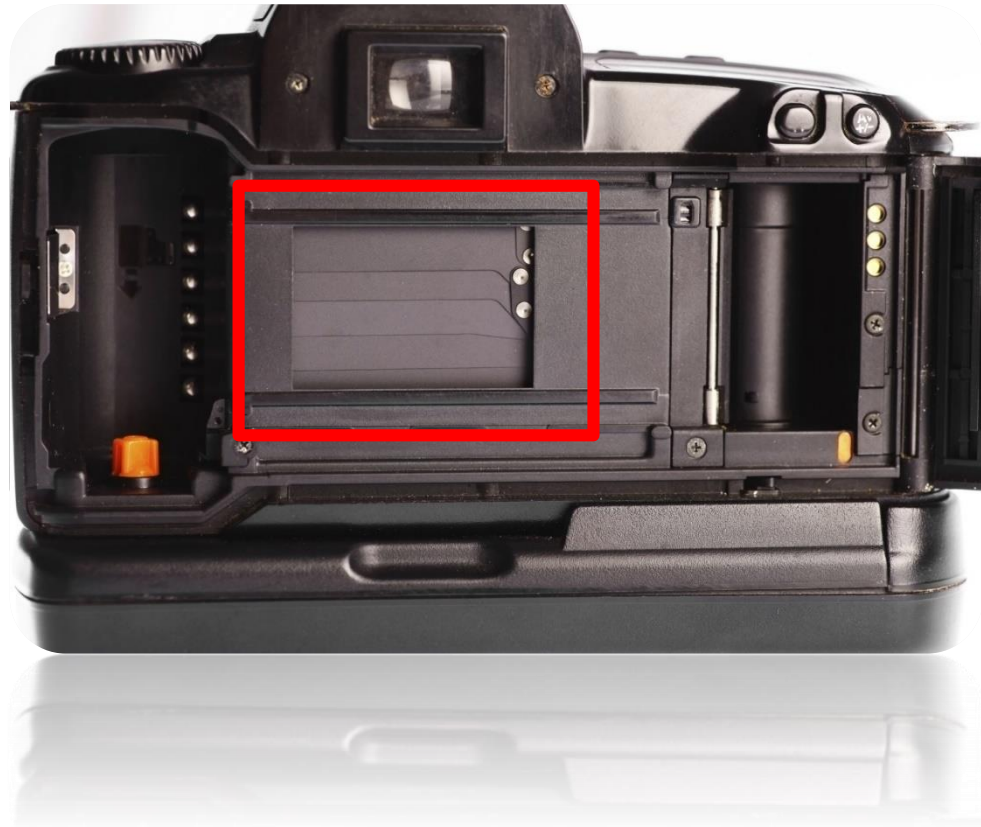


The Camera

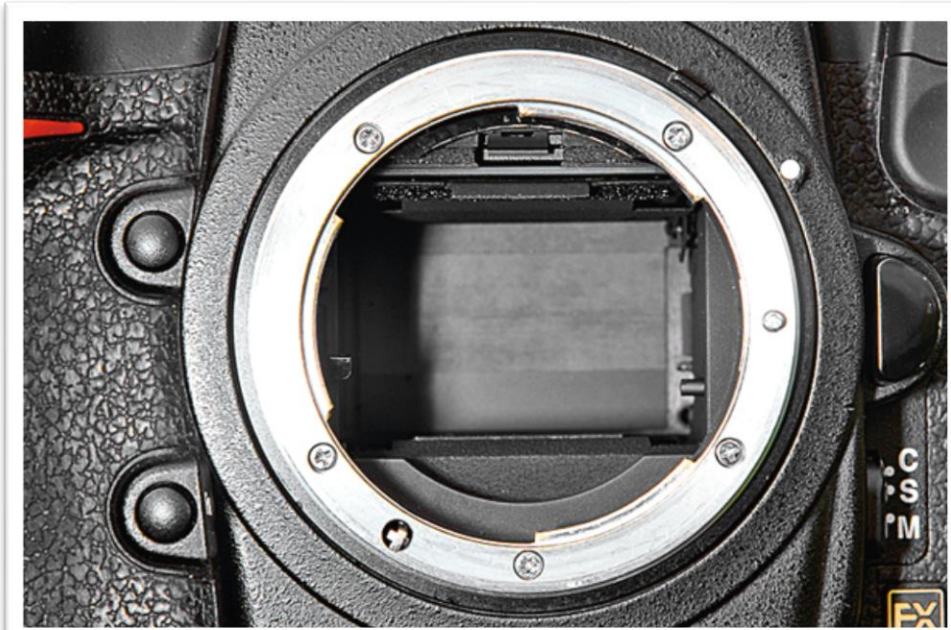


Shutter button

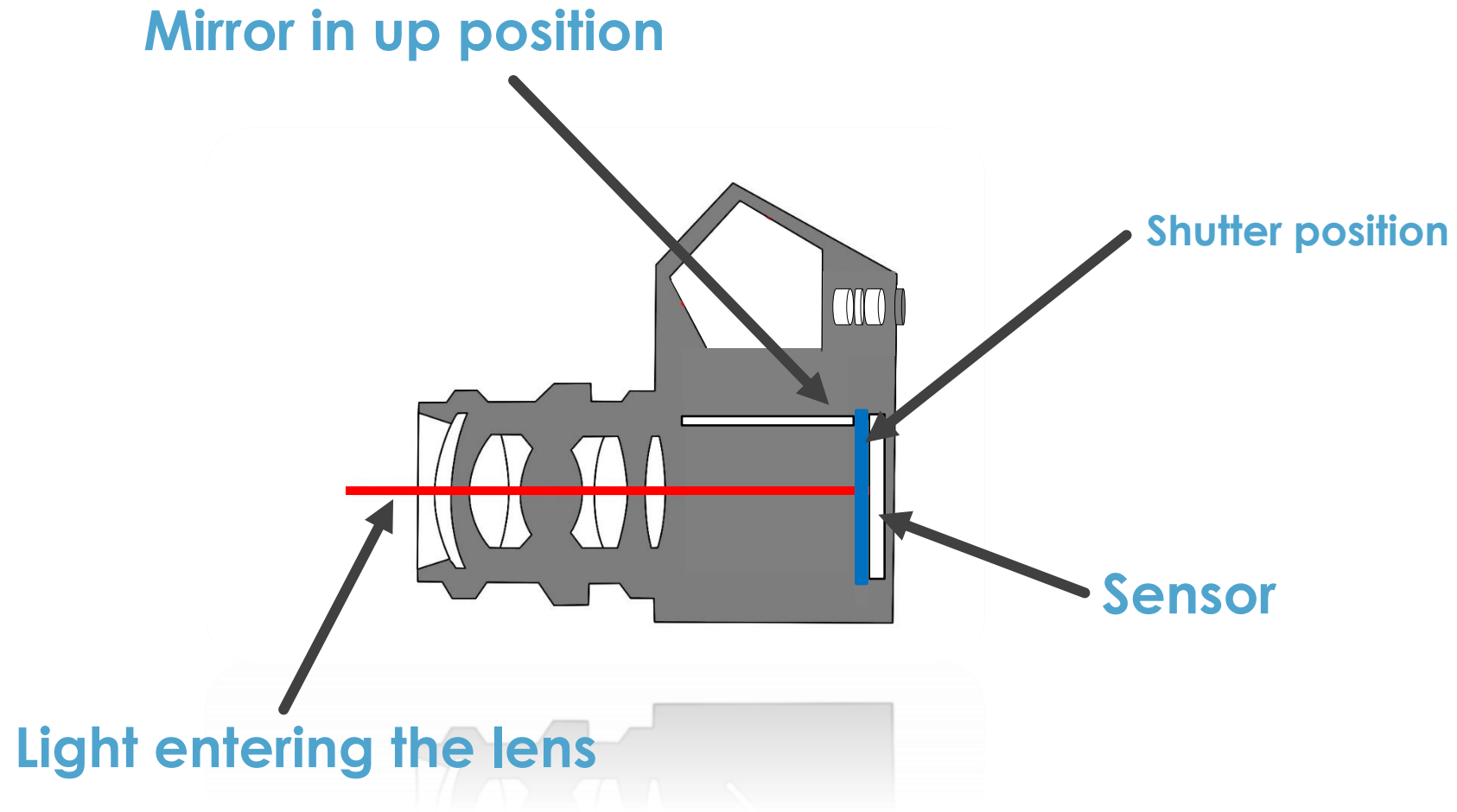
Shutter Speed Dial



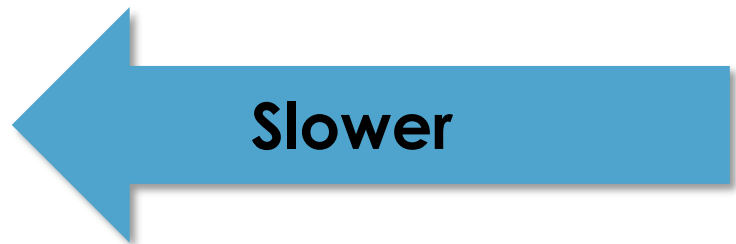
Focal Plane Shutter



Shutter in DSLR



- ▶ The camera's shutter controls the **duration** that light is entering the camera and exposing the sensor.
- ▶ The **length of time** that the shutter is open is known as the **shutter speed**
- ▶ **If we need more light** – The shutter will be open for a **longer duration**
- ▶ **If we need less light** the shutter will be open for a **shorter duration**
- ▶ **Shutter Speeds** are measured in **seconds and fractions of a second**



1/4 - 1/8 - 1/15 - 1/30 - 1/60 - 1/125 - 1/250 - 1/500 - 1/1000 - 1/2000 - 1/4000 - 1/8000



How fractions of a second appear on the camera

2 - 4 - 8 - 15 - 30 - 60 - 125 - 250 - 500 - 1000 - 2000 - 4000 - 8000

How Seconds appear on the camera

1" - 2" - 4" - 8" - 15" - 30"



Shutter speed expressed as Fraction

How Shutter Speeds appear on the camera



Motion



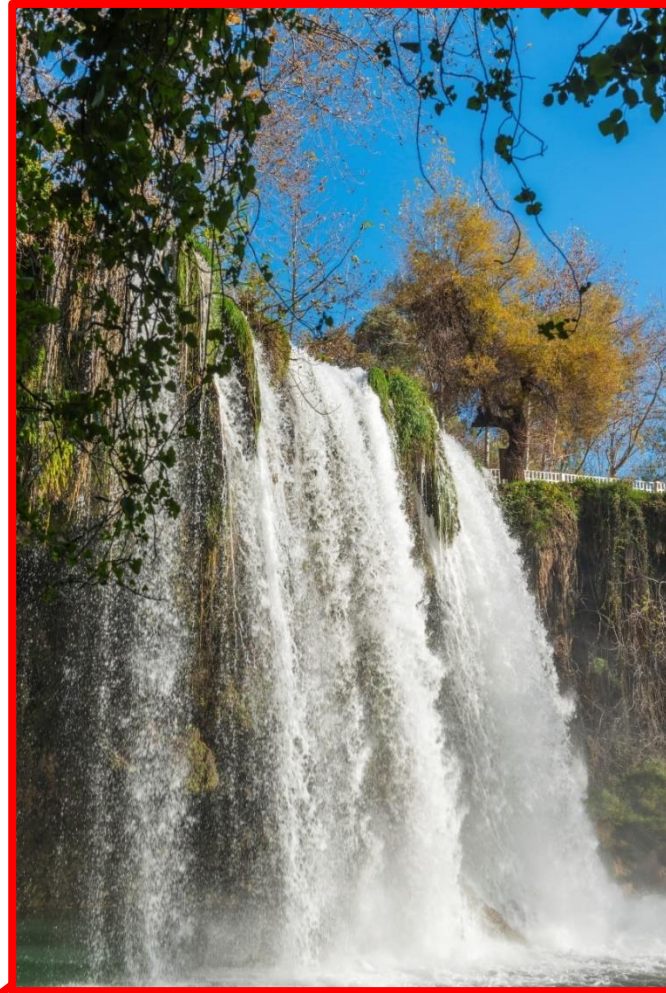
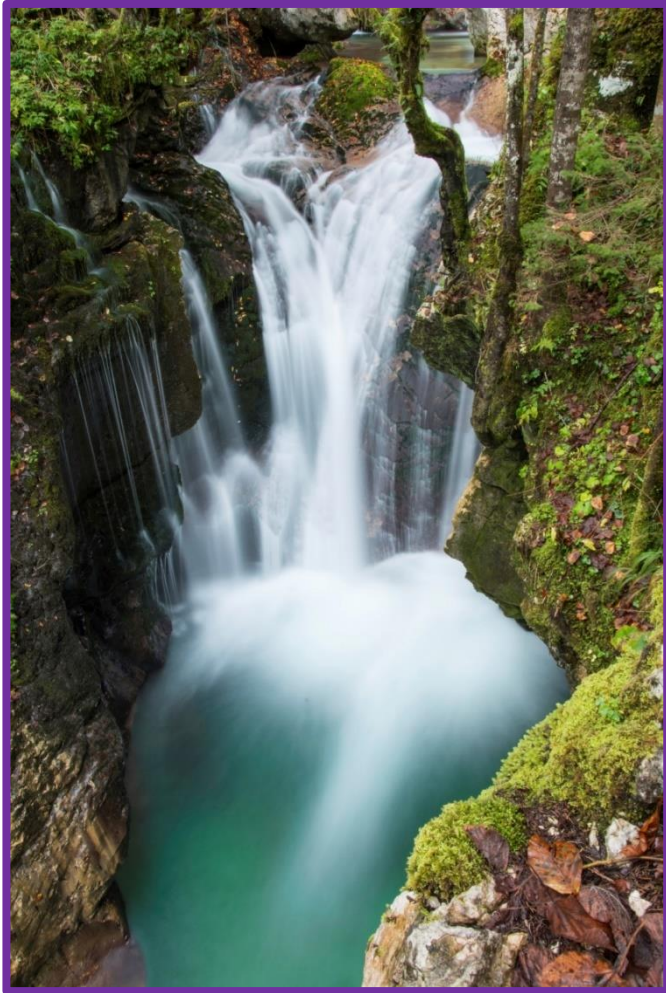
1/4 - 1/8 - 1/15 - 1/30 - 1/60 - 1/125 - 1/250 - 1/500 - 1/1000 - 1/2000 - 1/4000 - 1/8000

Controlling Motion



1/4 - 1/8 - 1/15 - 1/30 - 1/60 - 1/125 - 1/250 - 1/500 - 1/1000 - 1/2000 - 1/4000 - 1/8000

Controlling Motion



1/4 - 1/8 - 1/15 - 1/30 - 1/60 - 1/125 - 1/250 - 1/500 - 1/1000 - 1/2000 - 1/4000 - 1/8000

Fast Shutter Speeds



Slow Shutter Speeds



Slow Shutter Speeds







Main Dial



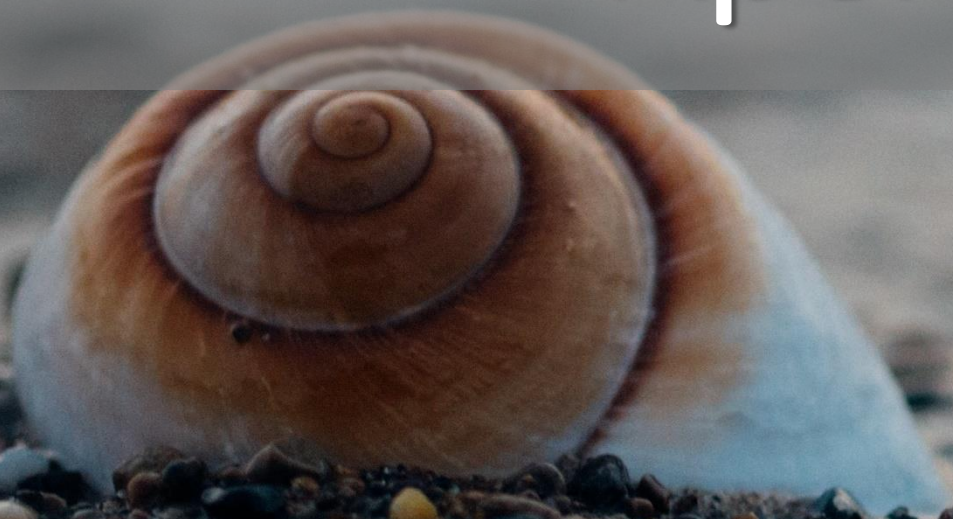
Quick Control Dial

Changing Shutter Speeds



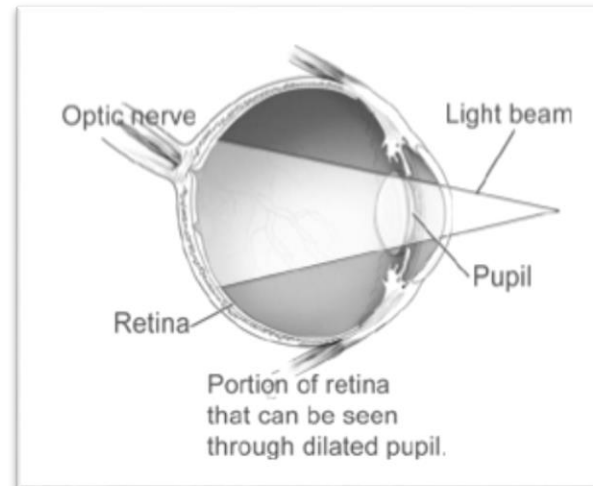
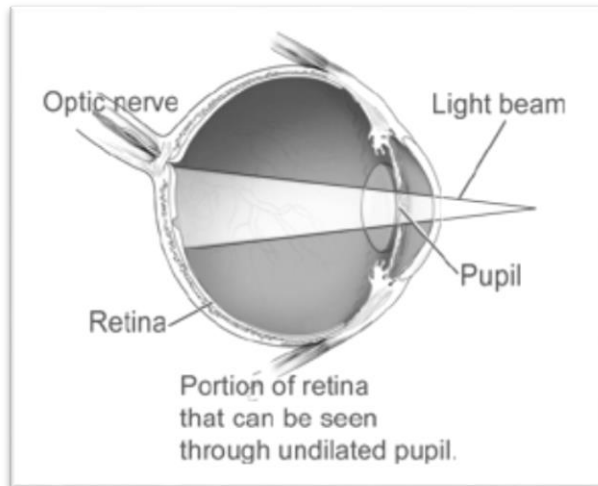
Camera Shake

Apertures



Apertures



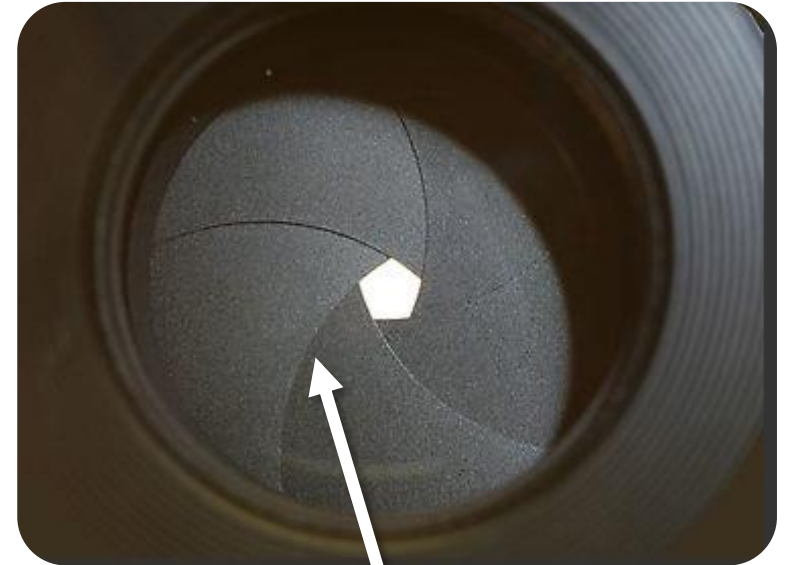




More Light

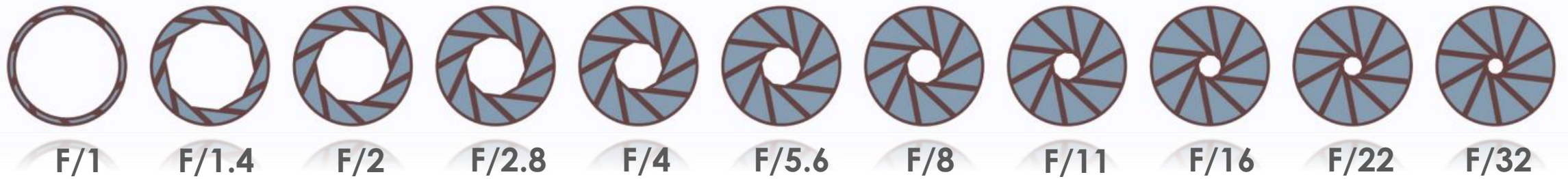


Less Light



Aperture Blades

- ▶ Apertures are expressed as F. Numbers or F Stops
- ▶ Each lens will have a certain range of standard aperture sizes



Common Apertures – F Stops

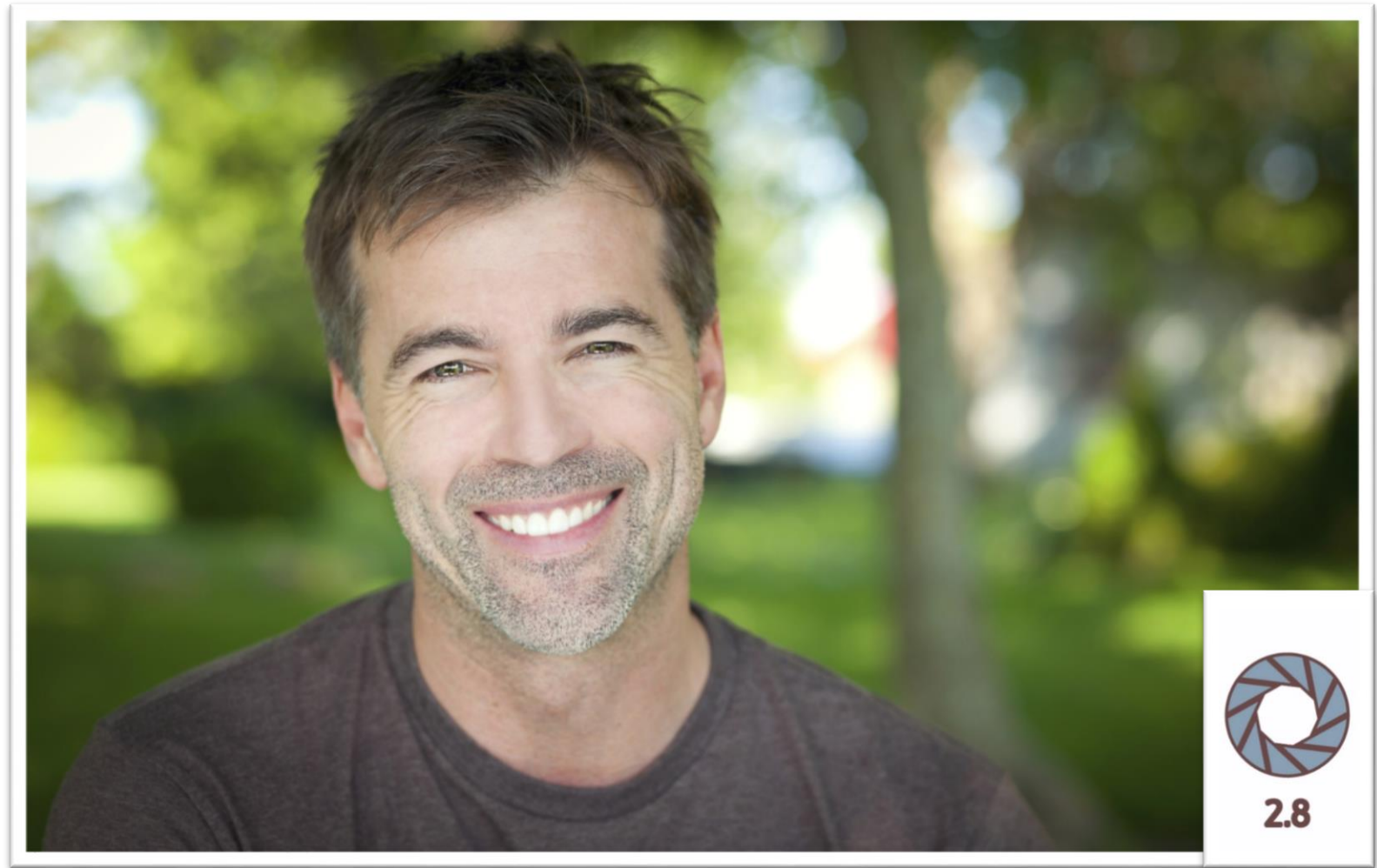


How Apertures appear on the camera

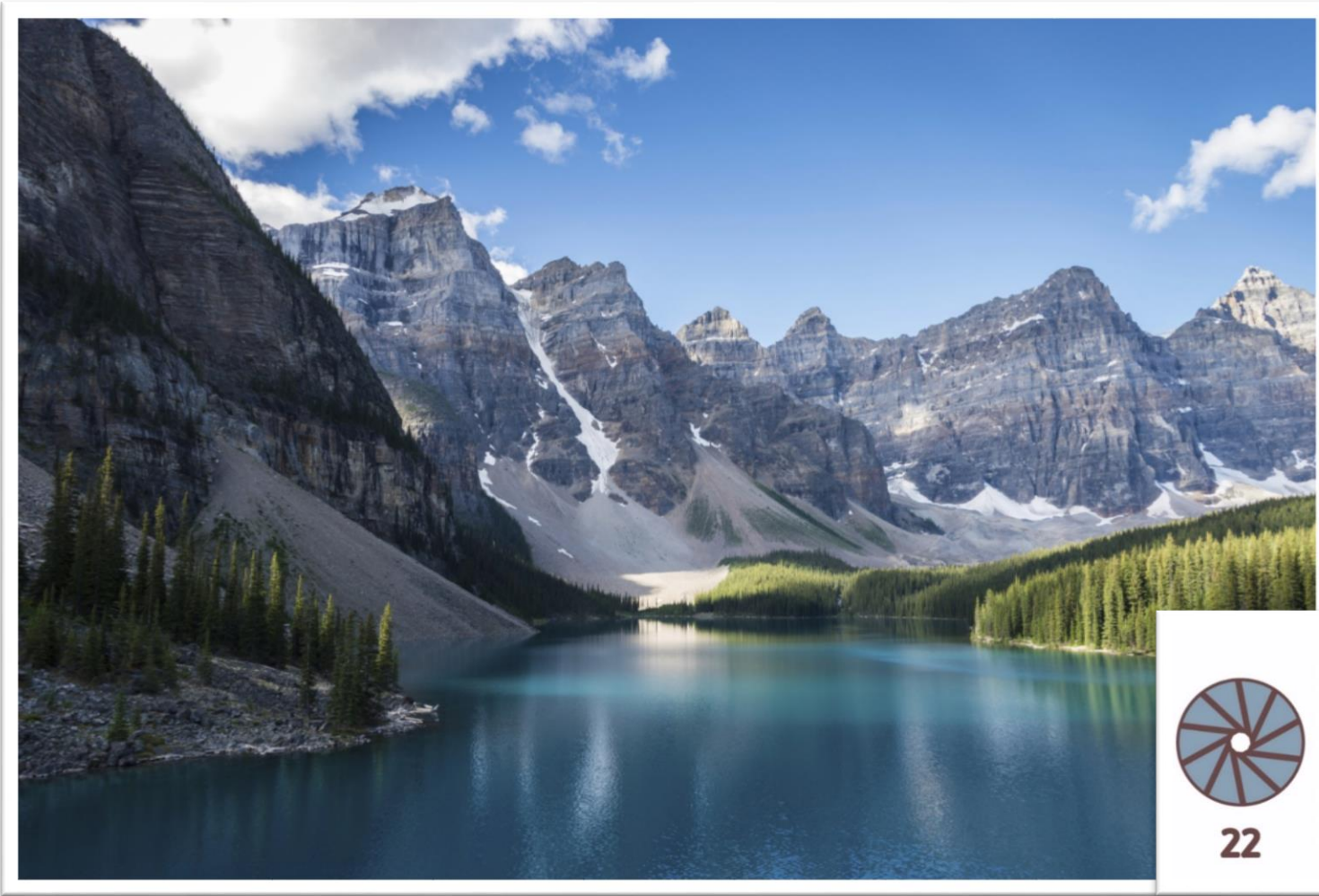


Depth of Field

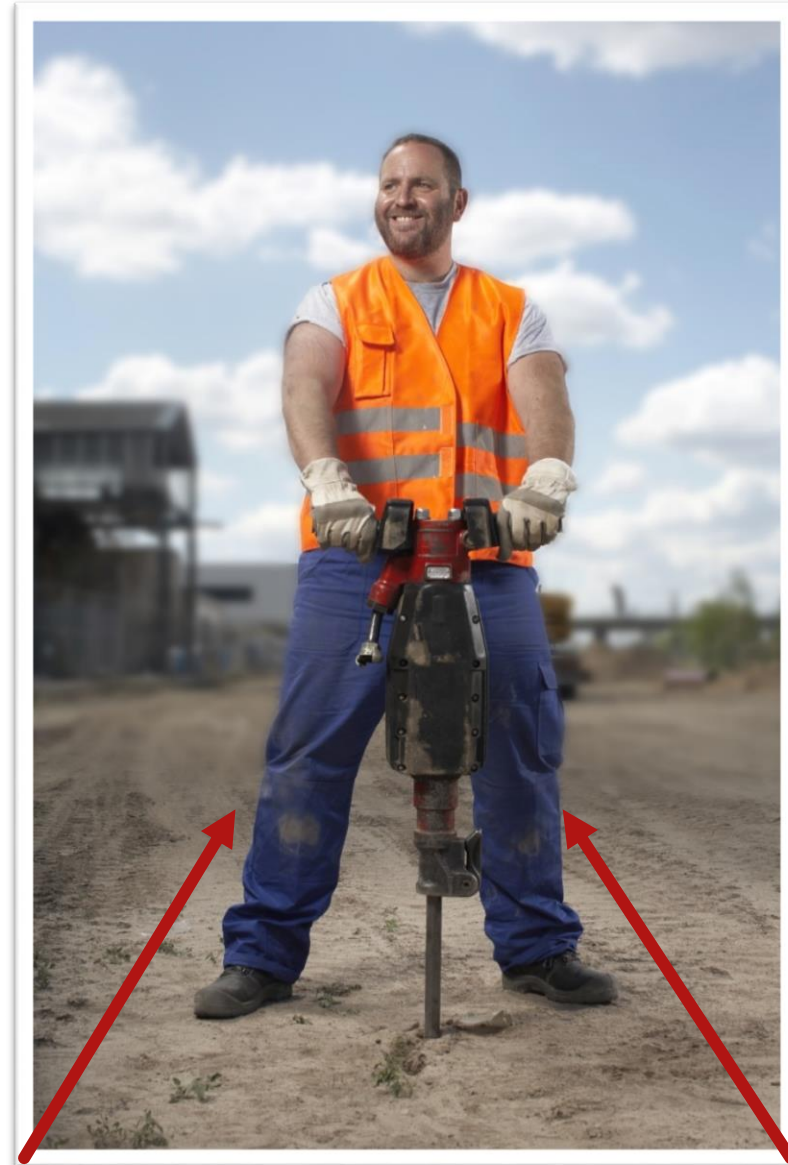
Shallow Depth of Field



Deep/Wide Depth of Field

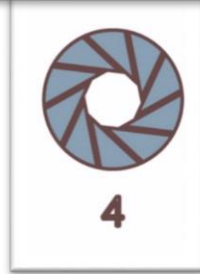
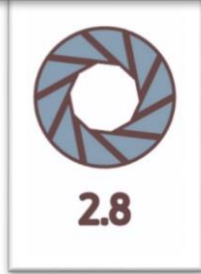


Depth of Field





Depth of Field in action



Depth of Field in action



2.8



4



5.6

Depth of Field in action



2.8



4



5.6



8

Depth of Field in action



2.8



4



5.6



8



11

Depth of Field in action



2.8



4



5.6



8



11



16

Depth of Field in action



2.8

Changing Focus



2.8

Changing Focus

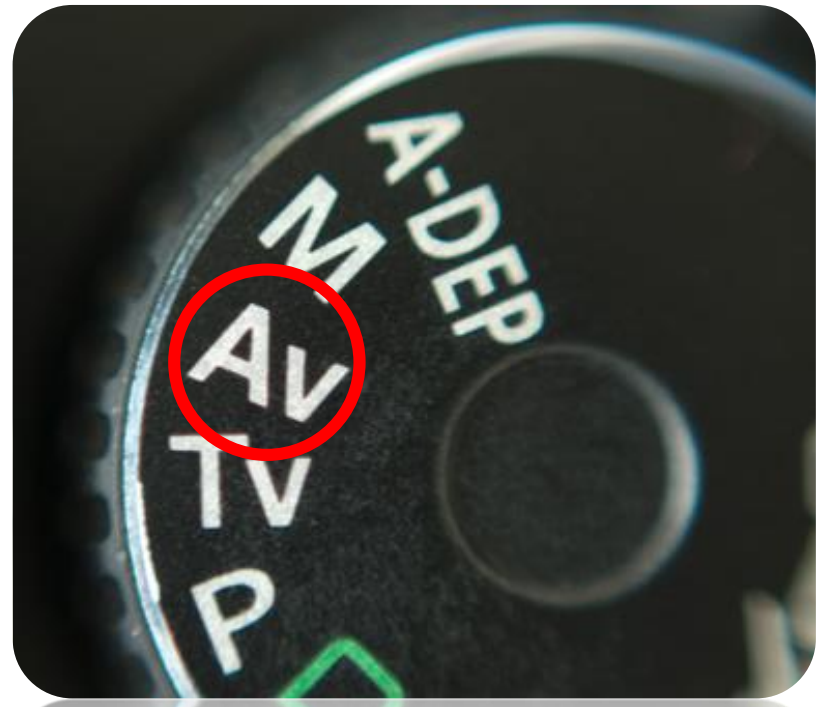
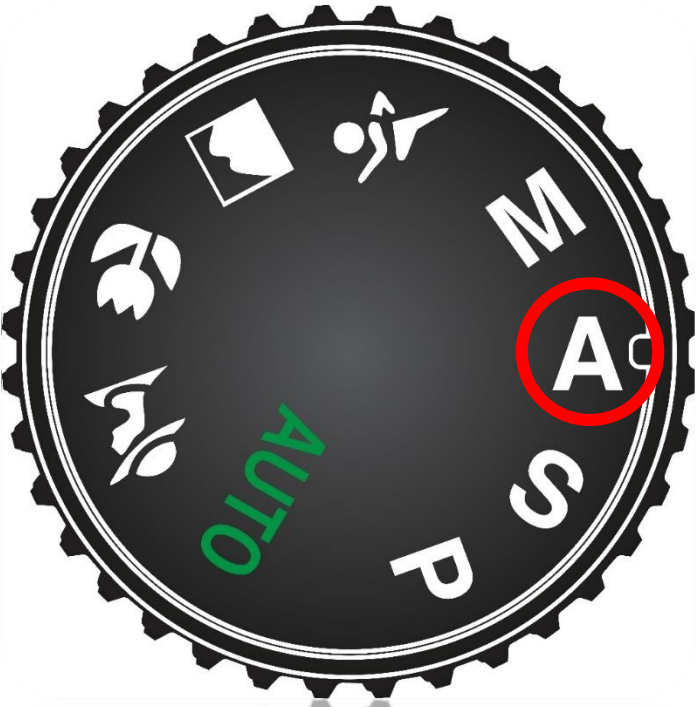


2.8

Changing Focus

Changing Focus





Controlling Aperture



Main Dial



Quick Control Dial

Changing Aperture



Aperture Button

Summary

- ✓ Motion – Shutter Speeds
- ✓ Depth of field – Apertures
- ✓ Confidence in Skills and Knowledge
- ✓ Expansion of photographic vocabulary

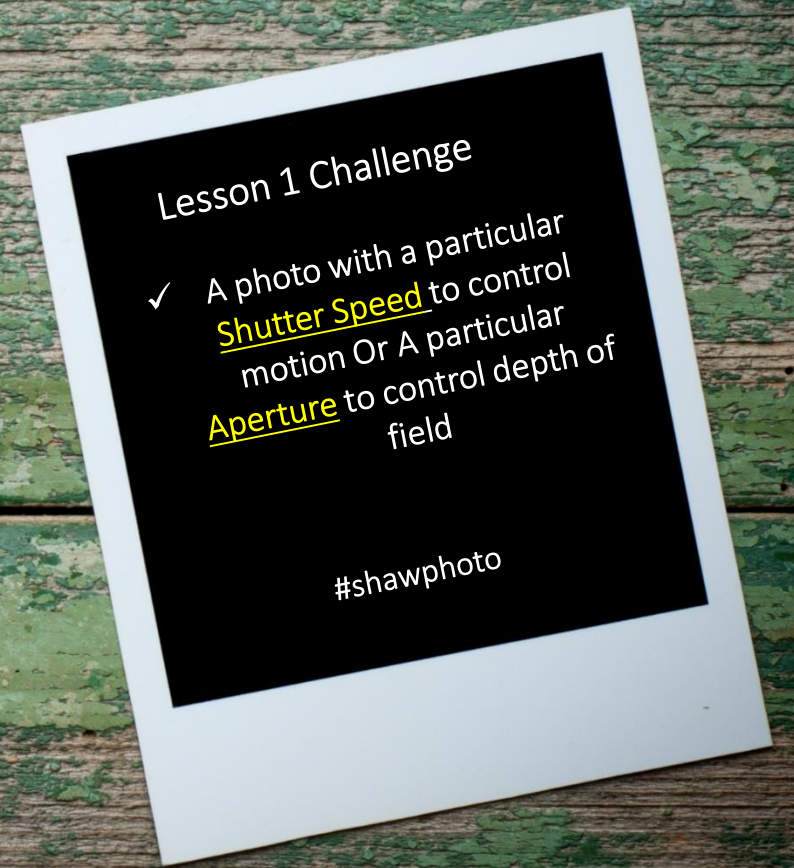
Congratulations you have just completed Lesson 3

Attend all of the lessons live to ask Questions in real time and benefit the most!!

We're here to help, so contact us anytime!

photography@shawacademy.com

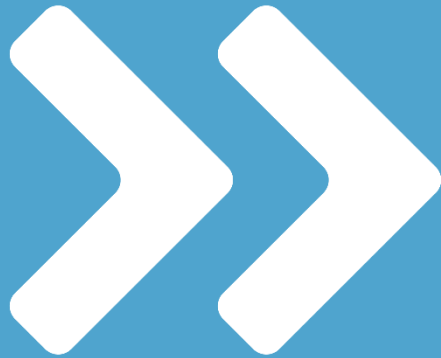
Weekly Challenge



www.facebook.com/shawacademy

[@shawacademy](https://twitter.com/shawacademy)





Your Next Lesson

Lesson 4

- The next session is “Composition”
 - Learning all about exploring the subject and scene
 - Compositional techniques
 - Compositional Vocabulary
- Attend all of the lessons LIVE and your knowledge will grow